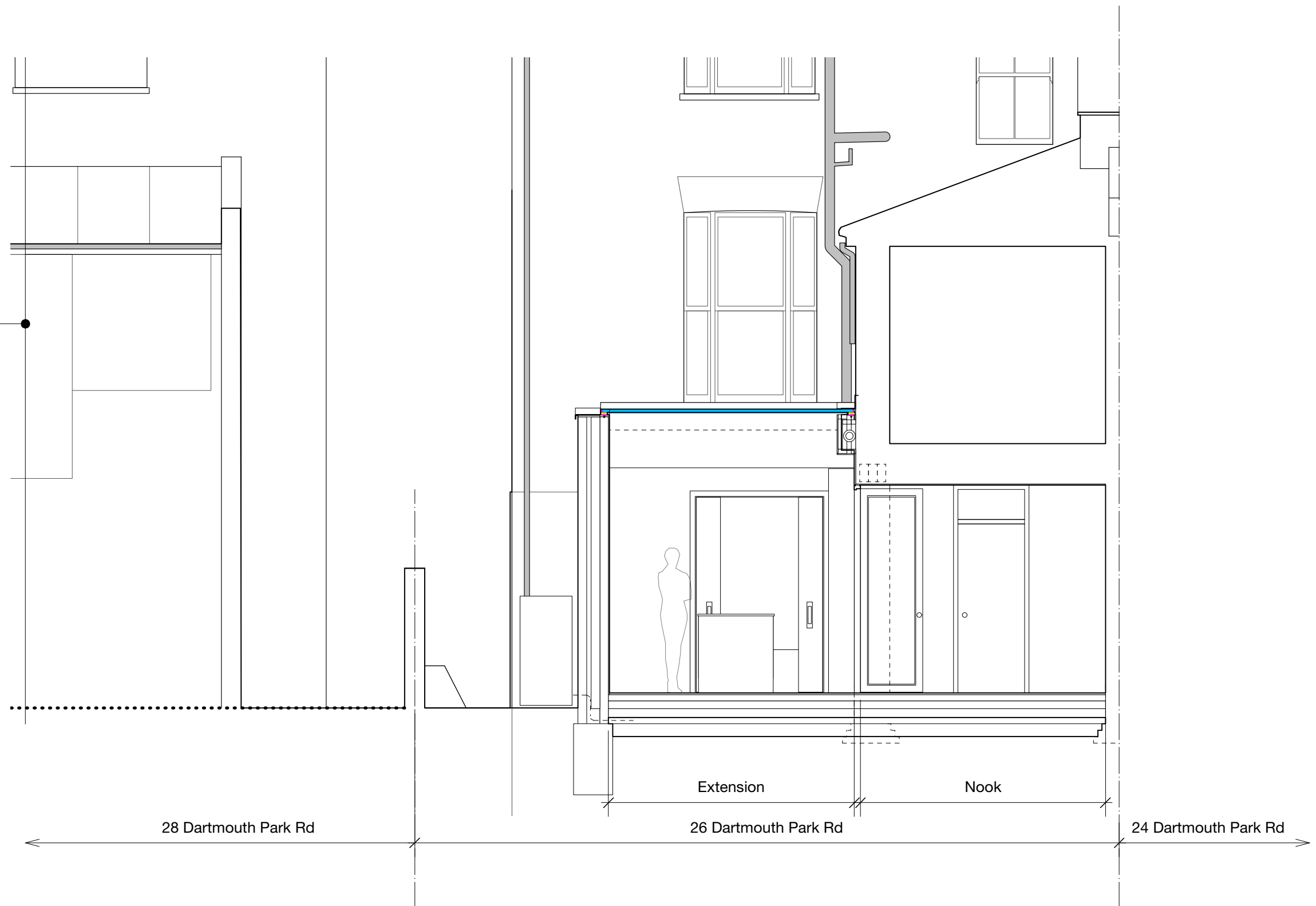


Extensions at 28 Dartmouth
Park Rd (planning consents
8802617 and 2009/2559/P)



0 2 3 4 M

26 Dartmouth Park Road NW5 1SX
Proposed Short Section CC - Through Extension
1:50 at A3
February 10, 2023

14_5002 Rev A

Rev A 22/03/2023 Planning Issue

Do not scale
PRELIMINARY DRAWING - NOT FOR CONSTRUCTION

Lucy Read Architects
13 Retcar Place N19 5TT lucyread@icloud.com 07779 789 268