

NOTES

THIRDWAY INTERIORS DO NOT ACCEPT LIABILITY FOR ANY ERRORS AND OMISSIONS ARISING FROM THE PREPARATION OF BASE BUILD DRAWINGS WHICH ARE DERIVED FROM ORIGINAL MATERIAL PROVIDED BY OTHERS.

ALL DISCREPANCIES ARE TO BE REPORTED TO THIRDWAY INTERIORS.

GRID LINES ARE FOR REFERENCE PURPOSES ONLY.

ALL DIMENSIONS TO BE VERIFIED BY CONTRACTOR ON SITE PRIOR TO ANY WORKS COMMENCING.

DO NOT SCALE FROM THIS DRAWING.

THIS DOCUMENT IS THE PROPERTY OF THIRDWAY INTERIORS. COPYRIGHT IS RESERVED BY THEM, AND THE DRAWING IS ISSUED ON THE CONDITION THAT IT IS NOT COPIED, REPRODUCED OR RETAINED BY, NOR DISCLOSED TO ANY UNAUTHORISED PERSON, EITHER WHOLLY OR IN PART, WITHOUT THE CONSENT IN WRITING FROM THIRDWAY INTERIORS.

©THIRDWAY INTERIORS

STATUS

- Approval / Comment
- Information Only
- Building Control
- Contract
- Construction
- As-Built

REVISION DETAIL

| REV | DETAIL | BY | DATE |
|-----|---------------------|----|----------|
| P1 | FIRST DRAWING ISSUE | AJ | 13.01.23 |

CLIENT

MENZIES AVIATION

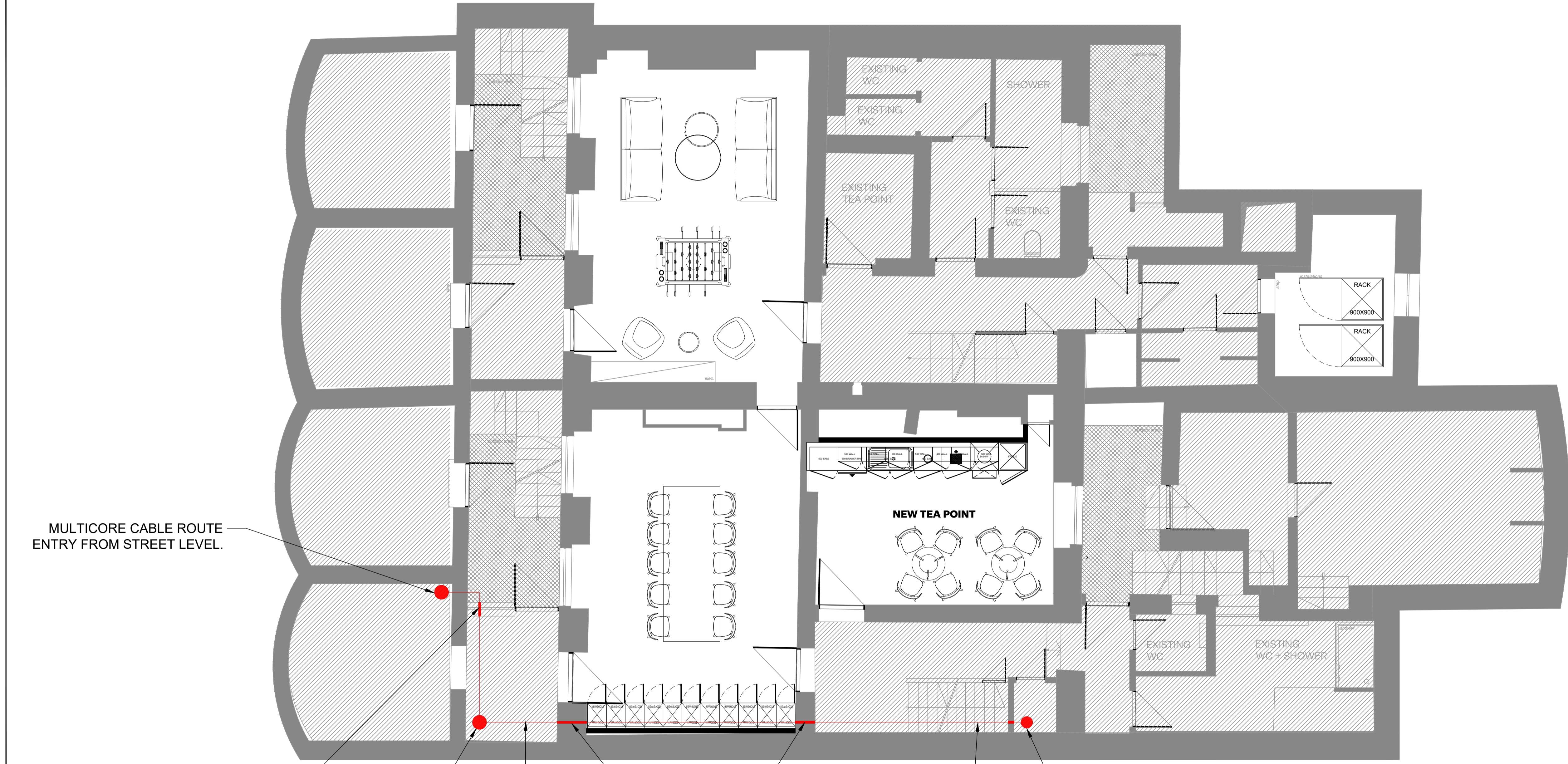
PROJECT ADDRESS

21-22 BLOOMSBURY SQUARE LONDON

DRAWING TITLE

LOWER GROUND FLOOR PROPOSED MULTICORE CABLE ROUTE

| | |
|-------------|-------------------------|
| DWG NO: | 41358-LGF-MCR |
| REVISION: | P1 |
| SCALE @A1: | 1:50 @ A3: 1:100 |
| DATE: | 13.01.23 |
| DRAWN BY: | AJ |
| CHECKED BY: | FS |



MULTICORE CABLE ROUTE ENTRY FROM STREET LEVEL.

CABLE ENTRY THROUGH EXTERNAL WALL AT LOWER GROUND FLOOR LEVEL. SMALL HOLE DRILLED THROUGH WOOD NEXT TO WINDOW FRAME.

EXISTING FSB.

CABLE TACKED TO WALL.

CABLE ROUTE FROM EXISTING FSB TO EXISTING CSB - DRILLED THROUGH WALL AT HIGH LEVEL. CABLE TACKED TO WALL.

CABLE TACKED TO WALL.

EXISTING CSP.

THIRDWAY

