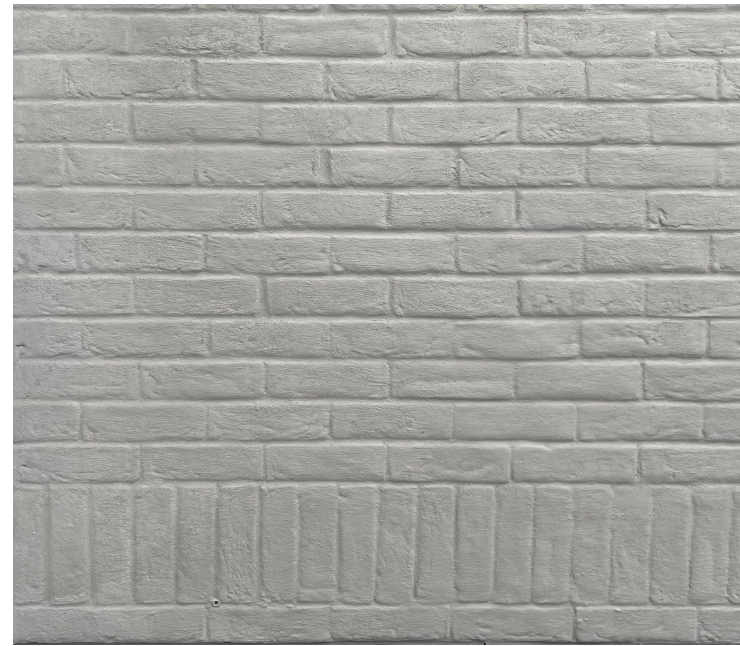
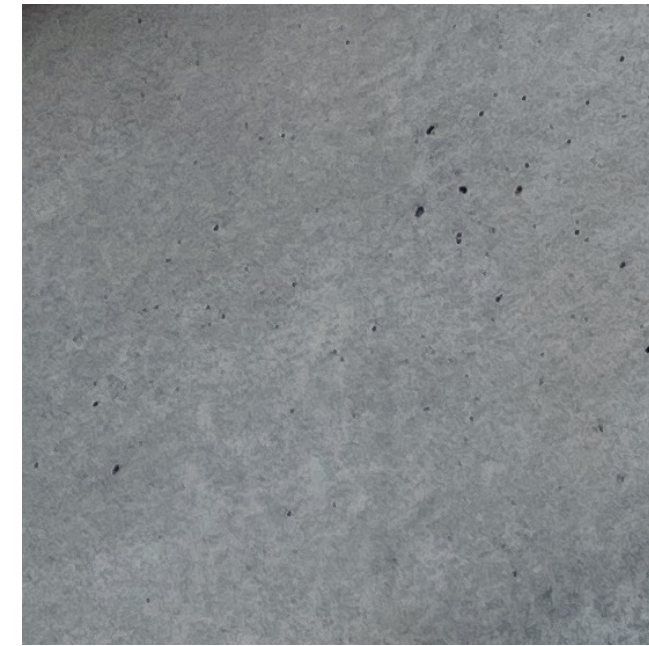


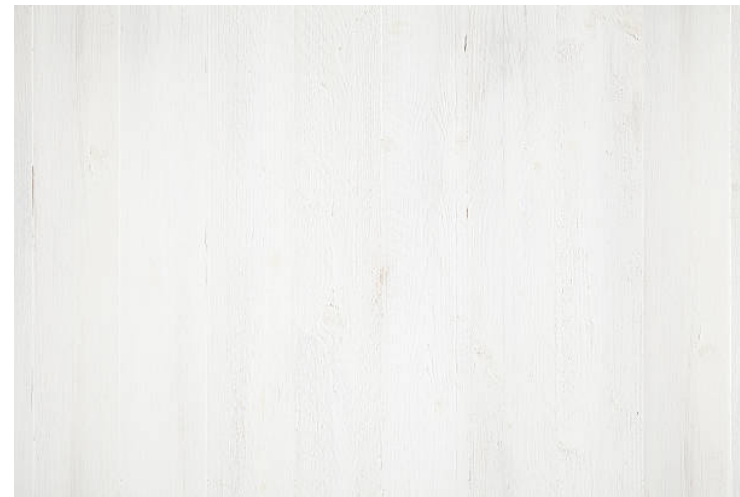
External Materials



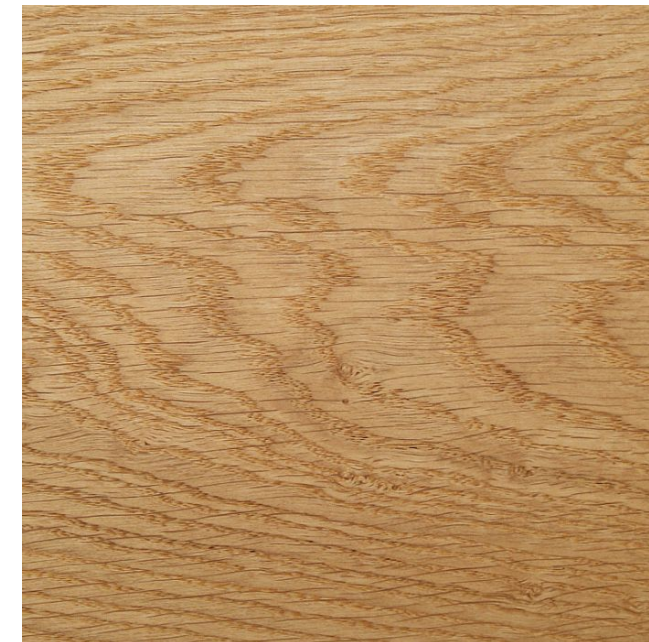
1. New External Brickwork
102.5mm brick with Kalklitr Kalei lime wash paint in 'Cloud'



2. New Concrete Pediment
Concrete beam cast in-situ and polished by specialist



3. New timber frame window W1.03
Matte white painted finish on timber (with obscured glazing)



4. New timber frame windows and doors W0.02 & D0.06
Oak timber frames with protective clear matte oil finish (with clear glazing)

REV	DATE	DESCRIPTION
L1	15.03.23	Issued to planning for discharge of conditions

RoachMatthews

Unit K106, The Biscuit Factory
100 Drummond Road
London SE16 4DG
020 4537 5231
hello@roachmatthews.com
roachmatthews.com

PROJECT	JOB CODE	
39 Rochester Road	002	
TITLE	DRAWING NUMBER	
External Materials	4404	
ISSUE	DATE	REVISION
Planning	Mar 23	L1
SCALE	SIZE	REVISION DATE
NTS	A3	15.03.23