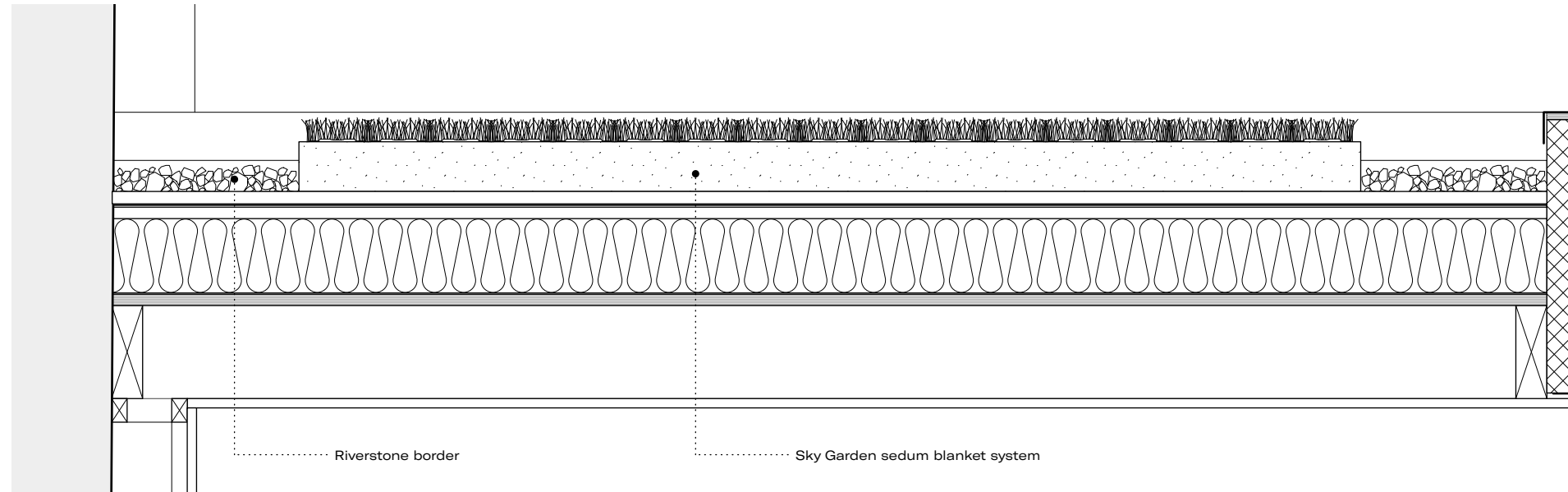


Green roof details



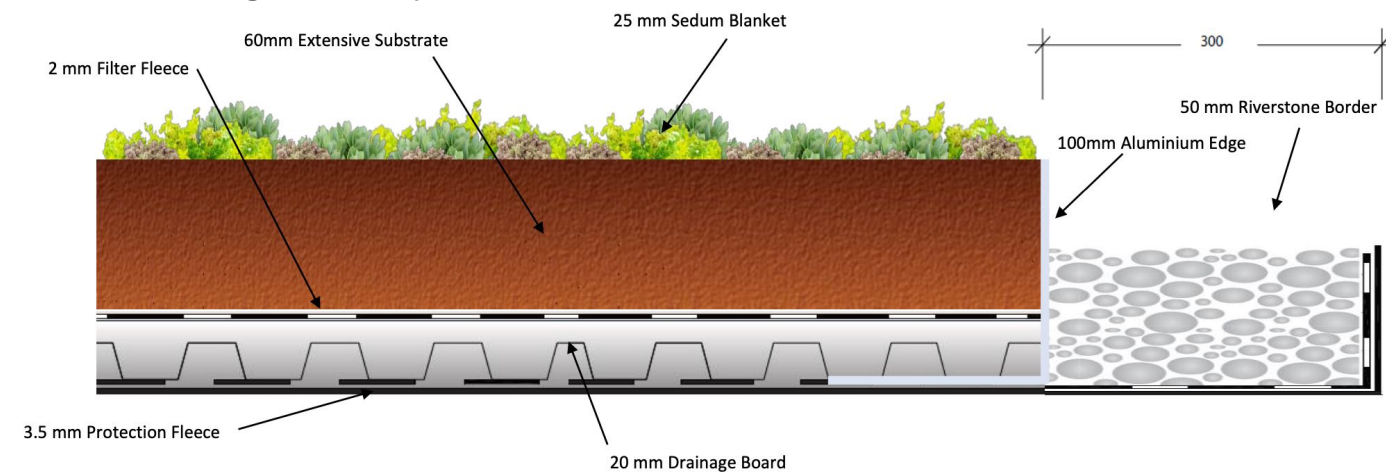
Detail section of green roof (1:10)

Specified by specialist supplier Sky Garden Ltd

Green roof build-up:

- Sedum blanket system with 300mm riverstone border
- 80mm substrate
- 20mm drainage board
- 2mm filter fleece
- 3.5mm protection fleece
- Cromar PRO GRP Top Coat
- Cromar PRO GRP Resin
- 18mm SterlingOSB tongue and groove board
- 120mm EcoTherm Eco-Versal PIR Insulation
- Vapour Control Layer
- 18mm plywood deck
- 150x50mm roof joists
- Ceiling void
- 15mm Gyproc FireLine plasterboard
- 2.5mm plaster skim
- U-Value of new roof to give 0.17 W/m2K

Detail of green roof system (not to scale)



Specified by specialist supplier Sky Garden Ltd

Green roof scheme of maintenance

Installation in optimum seasonal period (spring) as recommended by supplier.

Manual watering to occur once a week, at rate of 10-15 litres per sqm.

In initial 12 weeks and prolonged periods of hot and dry weather, manual watering to be carried out once a week to completely saturate.

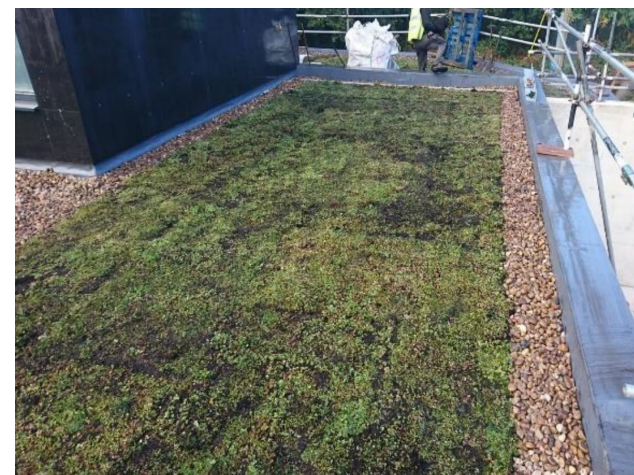
Sedum blanket specification

12 species of sedum, specifically chosen for green roof application, pre-planted in Sky Garden Sedum Living Roof System:

Sedum acre, Sedum album, Sedum ellacombianum, Sedum floriferum, Sedum hybridum, Sedum middendorffianum, Sedum montanum, Sedum Pulchellum, Sedum reflexum, Sedum selskianum, Sedum sexangulare, Sedum spurium.

90% vegetation coverage on installation.

Example image of Skygarden product installation



REV	DATE	DESCRIPTION
L1	15.03.23	Issued to planning for discharge of conditions

RoachMatthews

Unit K106, The Biscuit Factory
100 Drummond Road
London SE16 4DG
020 4537 5231
hello@roachmatthews.com
roachmatthews.com

PROJECT	JOB CODE	
39 Rochester Road	002	
TITLE	DRAWING NUMBER	
Sedum roof detail	4403	
ISSUE	DATE	REVISION
Planning	Mar 23	L1
SCALE	SIZE	REVISION DATE
1:10	A3	15.03.23