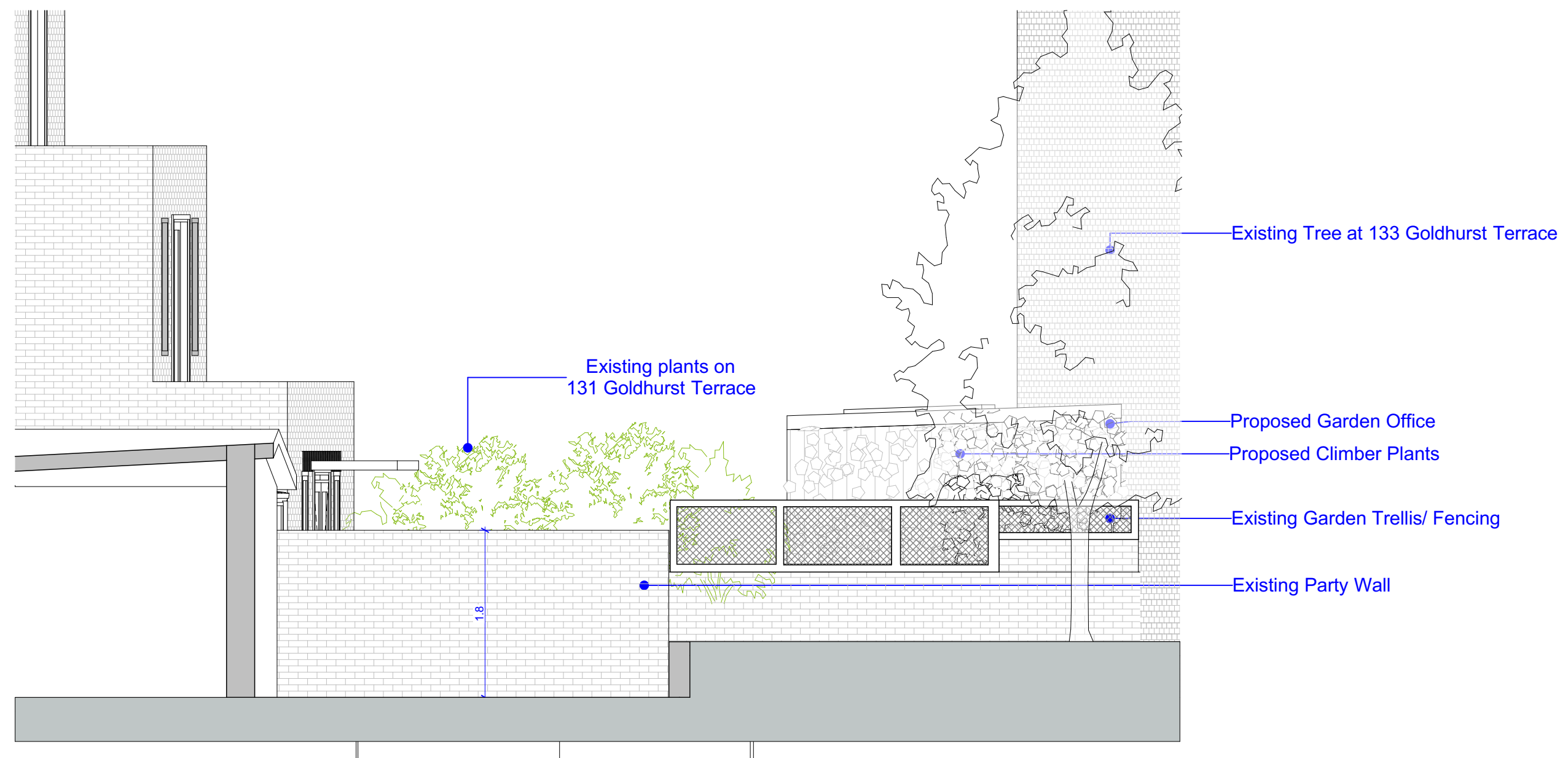


**Existing Materials:**

- E1 - White PVC framed doors and windows
- E2 - Mixed London stock and red aged bricks
- E3 - Existing timber door
- E4 - White timber window
- E5 - Timber access gate
- E6 - Vertical timber fencing
- E7 - Polycarbonate awning

**Proposed Materials:**

- P1 - London stock aged bricks
- P2 - Metal framed glass panels
- P3 - New light-color tiled stairs
- P4 - Timber fencing
- P5 - Metal Framed Awning
- P6 - Vertical timber slats
- P7 - Timber framed double glazed windows
- P8 - Timber framed double glazed sliding door
- P9 - White painted low level retaining walls
- P10 - Timber framed frosted double glazed window
- P11 - Metal framed door awning



01

Elevation from 133 Goldhurst Terrace

1:50